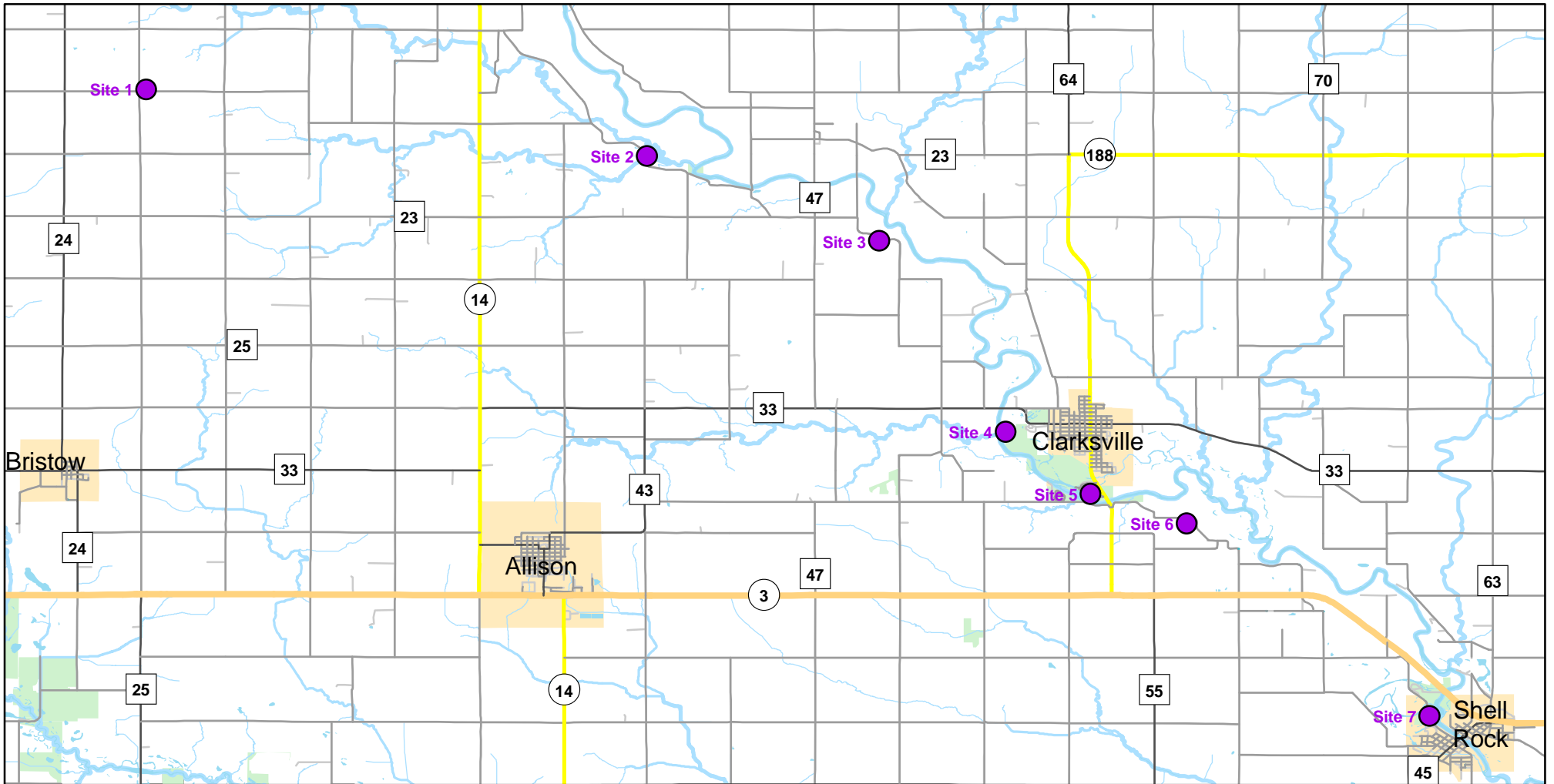




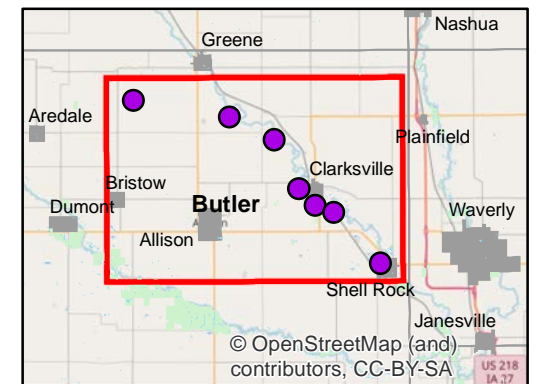
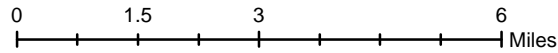
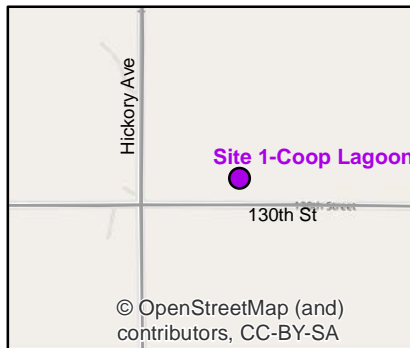
# Volunteer Wildlife Monitoring Program (VWMP) Frog

Route ID: 84 County: Butler

Click for Google Maps to Site 1: <https://www.google.com/maps/dir/?api=1&destination=42.8621214971,-92.8870001426>



Enlarged View of Site 1

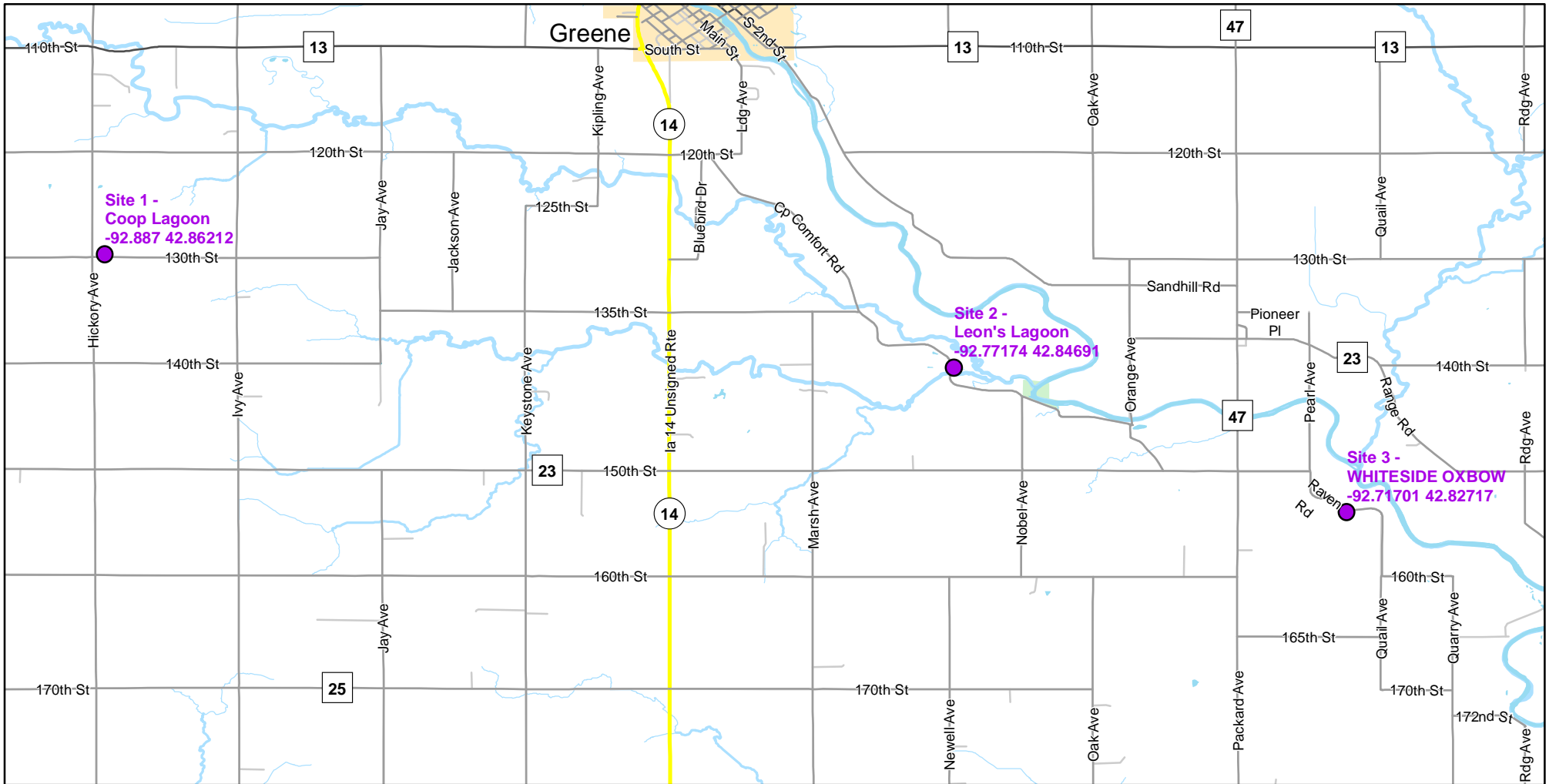




# Volunteer Wildlife Monitoring Program (VWMP) Frog

Route ID: 84 County: Butler

Click for Google Maps to Site 1: <https://www.google.com/maps/dir/?api=1&destination=42.8621214971,-92.8870001426>

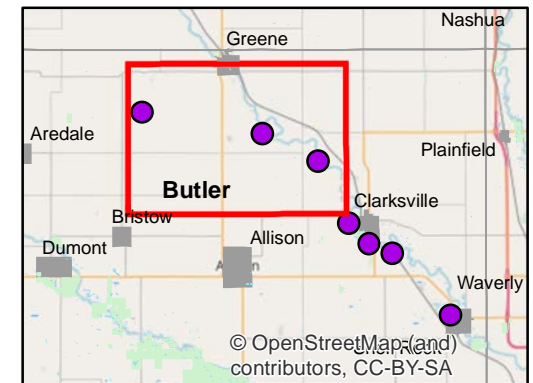
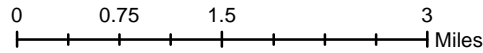


Enlarged View of Site 2



## Legend

----- Trails

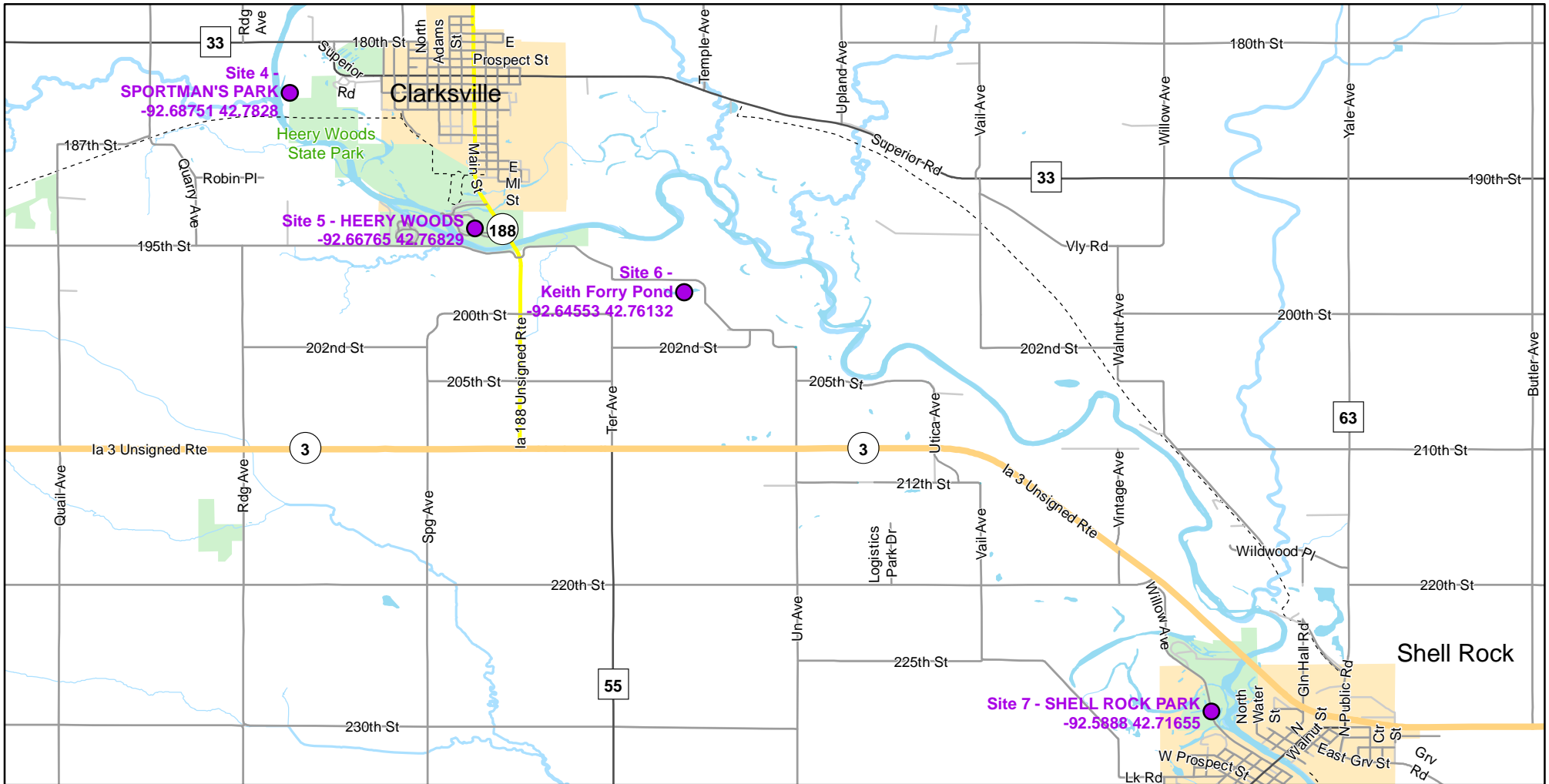




# Volunteer Wildlife Monitoring Program (VWMP) Frog

Route ID: 84 County: Butler

Click for Google Maps to Site 1: <https://www.google.com/maps/dir/?api=1&destination=42.8621214971,-92.8870001426>

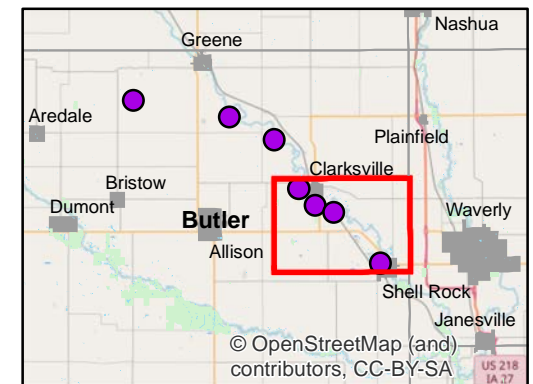
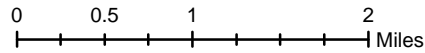


Enlarged View of Site 7



## Legend

----- Trails



© OpenStreetMap (and) contributors, CC-BY-SA



# Frog and Toad Call Survey Route Description

Route ID **84**

Established: 1992

Site Number	Name	County	Latitude	Longitude	Directions
1	COOP LAGOON	Butler	42.8565648	-92.8936047	
2	LEON'S LAGOON	Butler	42.856569	-92.7762575	Between two wetlands on Camp comfort Road
3	WHITESIDE OXBOW	Butler	42.8271728	-92.7170081	Just south of river oxbow off of Quail Avenue, North of Clarksville
4	SPORTMAN'S PARK	Butler	42.7828008	-92.6875049	West edge of Clarksville in Sportsman Park
5	HEERY WOODS	Butler	42.7682867	-92.6676516	Just outside of entrance to Heery Woods on Hwy 188 between the two bonds
6	KEITH FORRY POND	Butler	42.7609582	-92.6479685	East side of Keith Forry Pond
7	SHELL ROCK PARK	Butler	42.7165554	-92.5887958	In Shell Rock Park just south of large pond